

Maggie Brunjes | Homeless Network

At the SUH Event on 20 March 2019

**building alliances to
end homelessness**



**You are
too feart!**

”

In 10-15 mins

- ❑ Tell the story of the Glasgow Alliance to End Homelessness
- ❑ About the principles that guide it
- ❑ About our approach
- ❑ About our pin-drop moment...
- ❑ And our learning (so far!)

change is coming

- Following a review, an ambitious systems-change programme for tackling homelessness in Glasgow
- In **April 2019**, Glasgow City Health & Social Care Partnership will publish a tender for **strategic partners** to tackle homelessness and manage contract values of up to **£20million a year** in a new 7-10 year procurement cycle.
- Design of this new **Alliance to End Homelessness** has been coproduced by GCHSCP, third sector, service providers, GHN and GHIFT (*people with lived experience of homelessness*)



Direction of Travel

(what we now know)

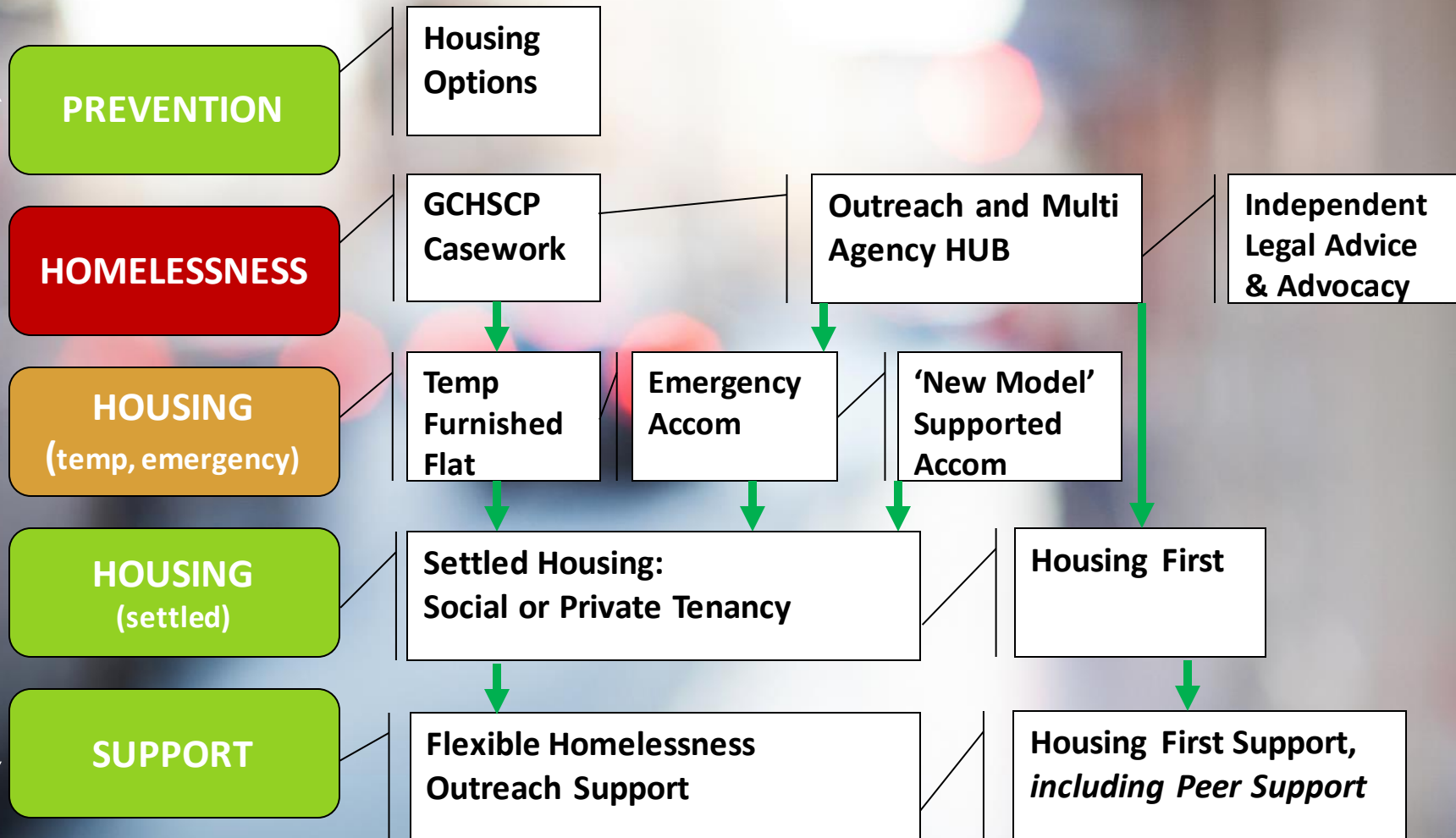
this way...



- An asset based approach achieved within an Alliance, based on an alignment around outcomes and commitment to principles;
- A housing-led approach that ensures people's right to mainstream housing and also assumes their ability to sustain it, with the right support;
- Flexible and resilient at-home support for people rehoused after a period of homelessness;
- Small network of supported accommodation for any periods in people's lives where mainstream housing cannot be sustained;
- Collaborative outreach, and with a central coordinating multi-agency HUB.

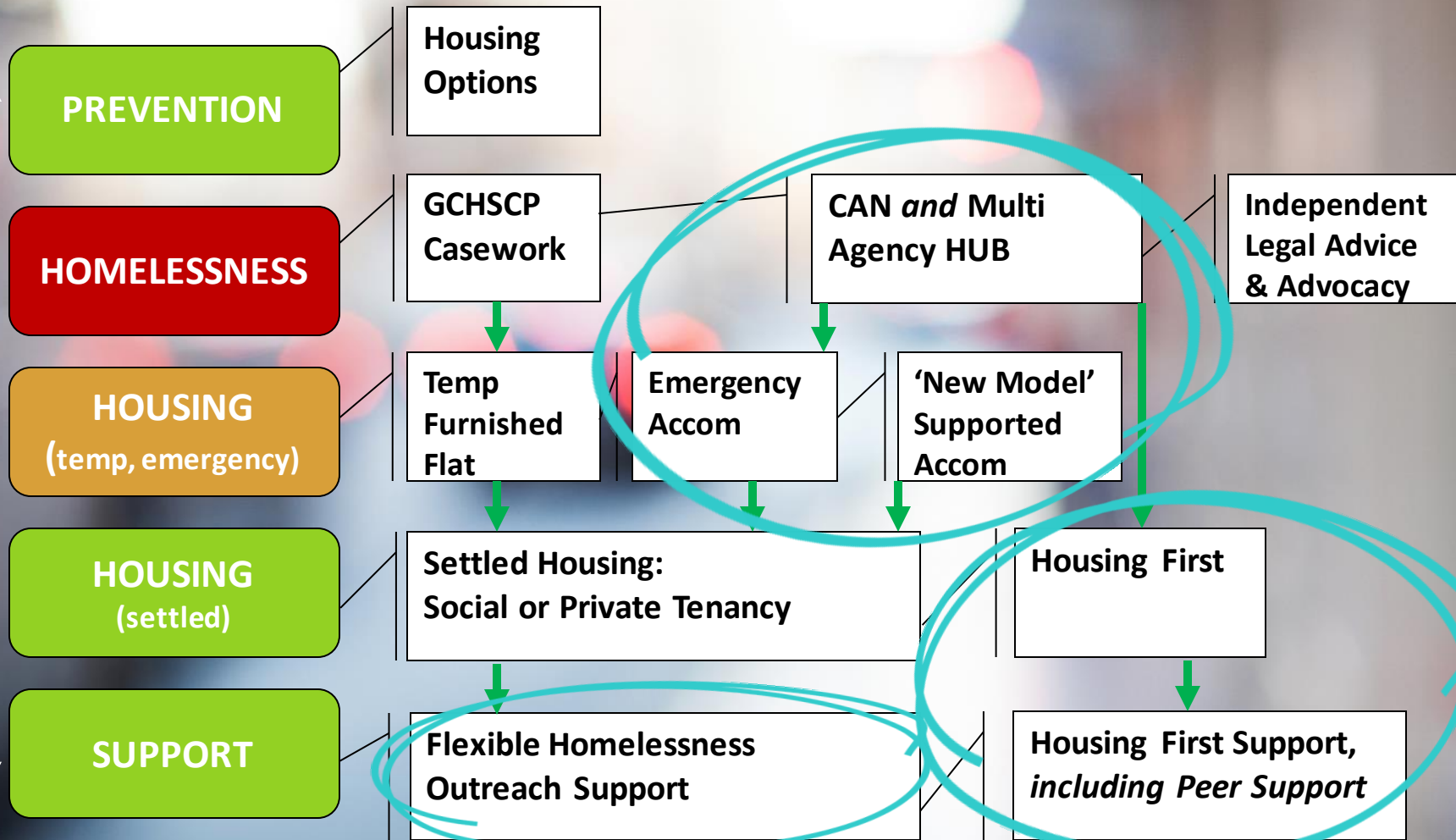
A simpler, housing-led system

Mainstream Health & Social Care Services



The Alliance

Mainstream Health & Social Care Services





Framing

to guide us

Framing to guide us



Tailored – support that is flexible, immediate and available for as long as it is needed. Respecting your ability to build your own life, supporting your own strengths and abilities and making sure choice and control is in your hands.

Local – the choice to be supported in your own home as part of a local community so that we can all live, work and use services in 'ordinary', not homeless places.

Realistic – helping you tackle the financial hardship that often causes homelessness will be as important as providing other types of support.

Co-produced – involved in all aspects of the Alliance including: allocation of resources; design, delivery and review of services; implementation, delivery and evaluation of the Alliance.



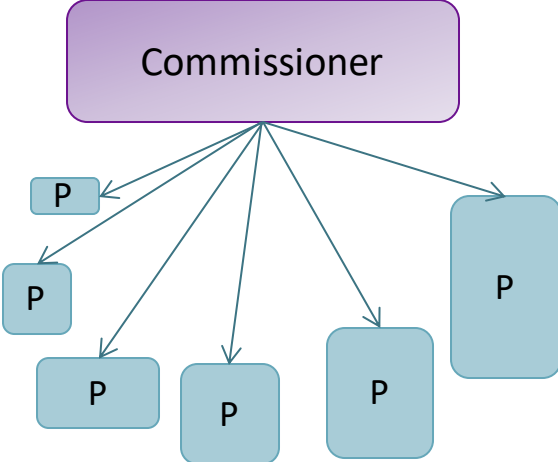
Alliancing & Alliance Contracting

Linda Hutchinson | LH Alliances

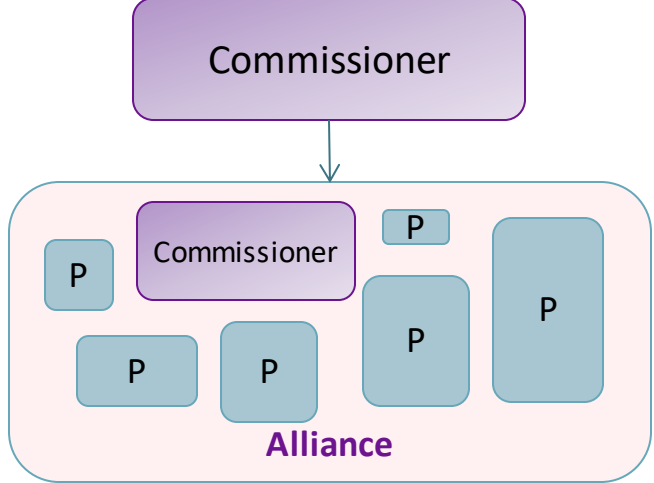
<http://lhalliances.org.uk/>

Alliance contract

Traditional contract



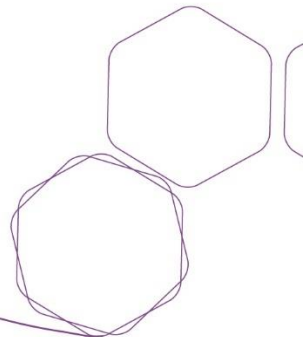
Alliance



Alliance principles

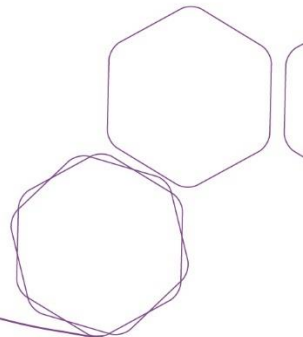
All of Us commit to working to Alliance Principles which are:

- a) to assume collective responsibility for all of the risks involved in providing services under this Agreement;
- b) to make decisions on a 'Best for Service' basis;
- c) to commit to unanimous, principle and value based-decision making on all key issues;



Alliance principles

- d) to adopt a culture of 'no fault, no blame' between the Alliance Participants and to seek to avoid all disputes and litigation (except in very limited cases of wilful default);
- e) to adopt open book accounting and transparency in all matters;
- f) to appoint and select key roles on a best person basis; and
- g) to act in accordance with the Alliance Values and Behaviours at all times.

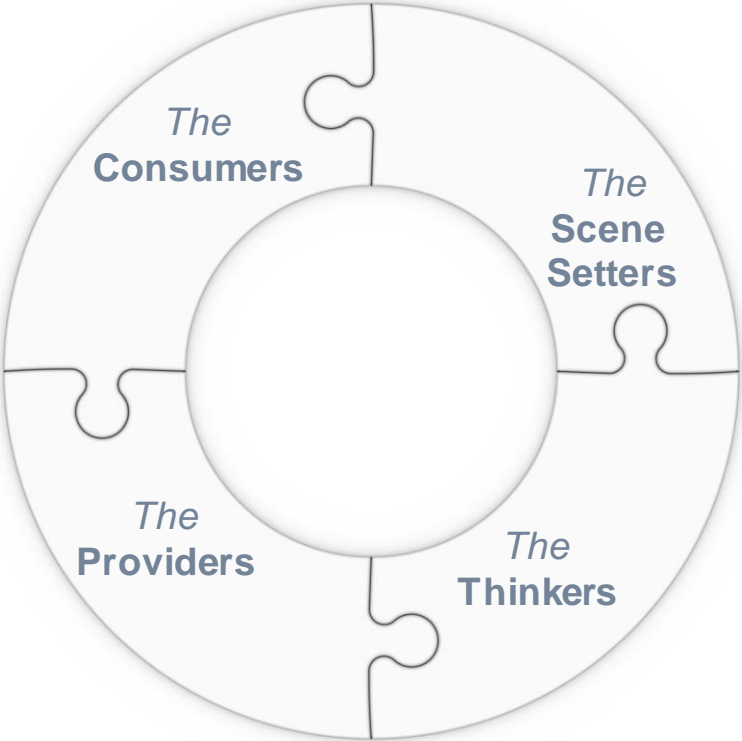




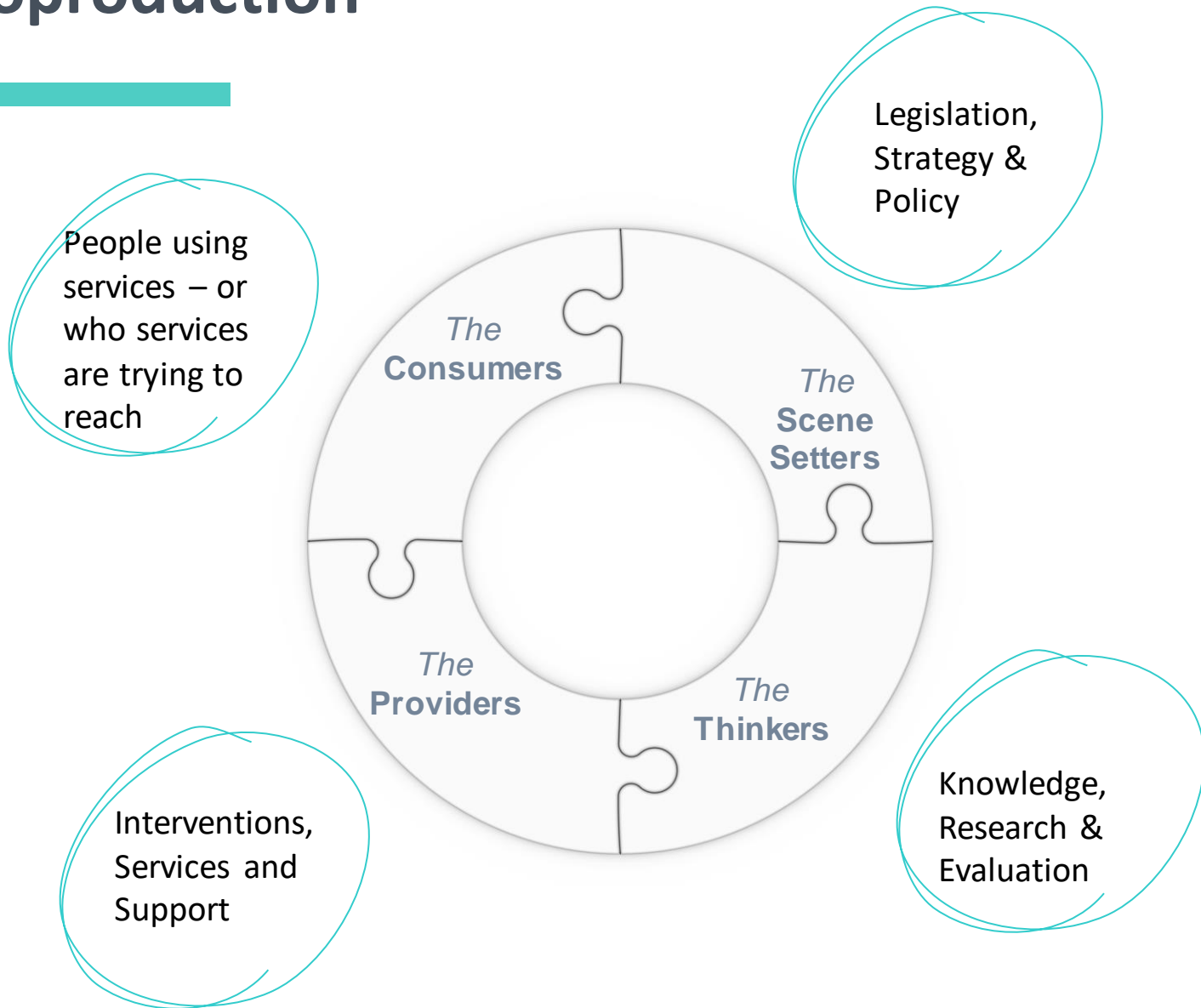
Coproduction

Unique Insights

Coproduction



Coproduction

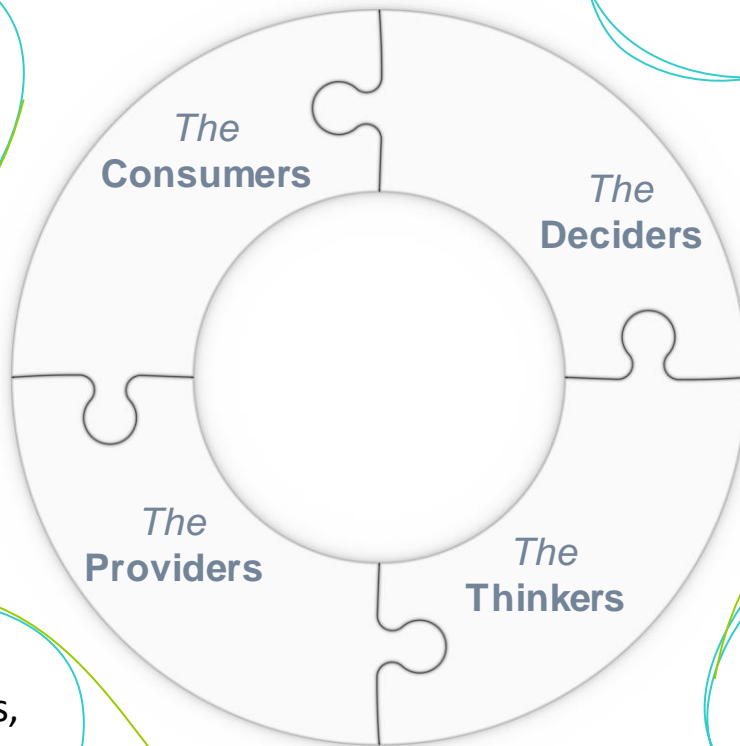


Coproduction

Integrated
Joint Board
Homelessness
SPG

Legislation,
Strategy &
Policy

People using
services – or
who services
are trying to
reach



'What Works'

GHIFT:
Glasgow
Homelessness
Involvement
and Feedback
Team

Knowledge,
Research &
Evaluation

Interventions,
Services and
Support

Homeless services, third
and independent sector



**You are
too feart!**

**And your fears are
nothing compared
to the fears we have**”

our

learning?

... so far

- ❑ Be brave! More hopes, less fears
- ❑ Be inconsistent and say the wrong things – it expands and consolidates ambition
- ❑ Give each other the benefit of the doubt, always
- ❑ Set a destination
- ❑ Disrupt if you must, but plan a safe transition

Safe Transitions...

DIFFERENT



webcomicname.com