



**scottish universities  
insight institute**

mobilising knowledge for a better Scotland

Roadshow

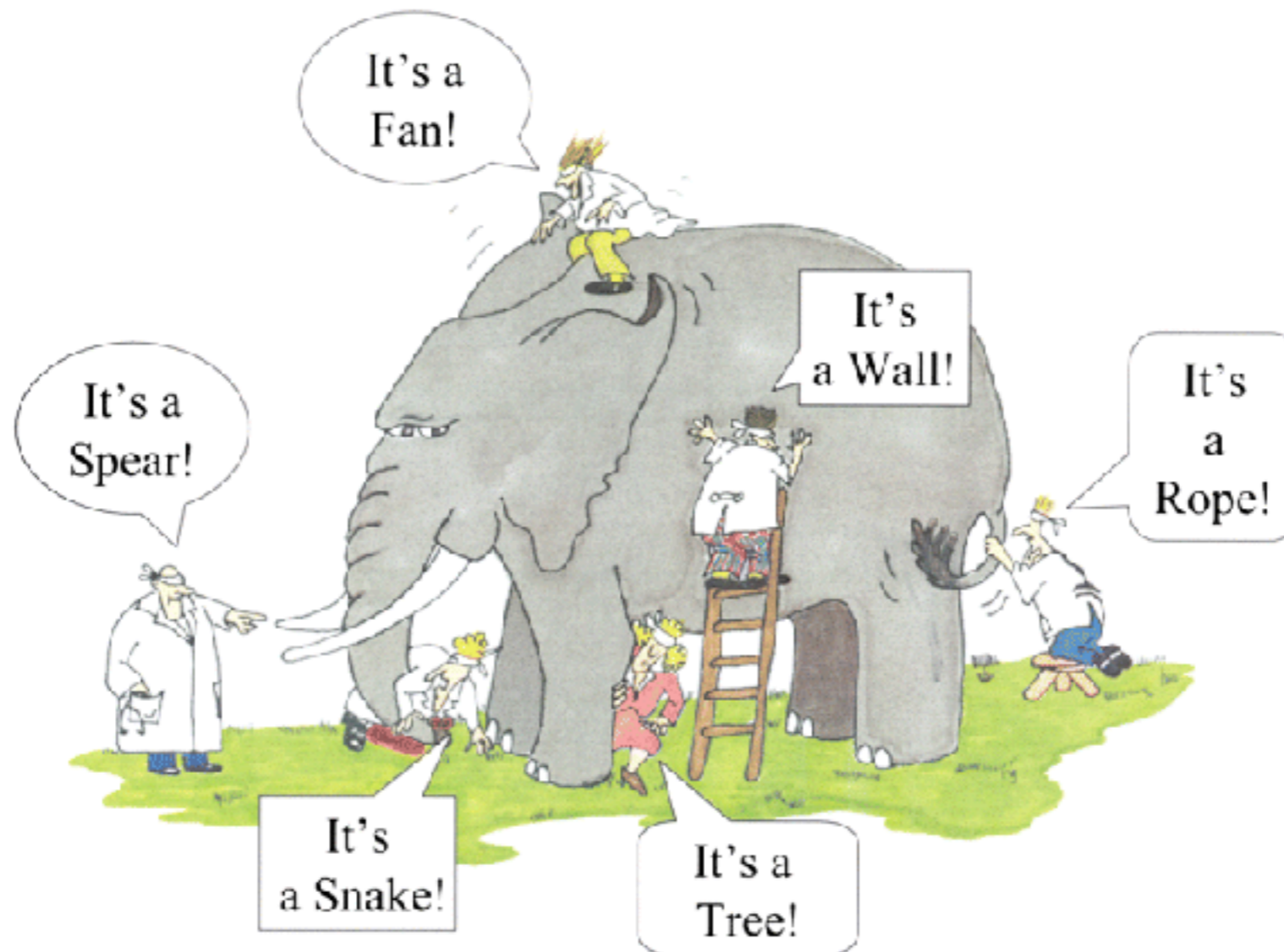
March 2020





scottish universities  
insight institute

mobilising knowledge for a better Scotland



**"...in the intersection between perspectives, real insight can be gleaned."**

Margaret Heffernan, 'Wilful Blindness'

**"When you step into an intersection of fields, disciplines, or cultures, you can combine existing concepts into a large number of extraordinary new ideas."**

Erans Johansson, The Medici Effect



scottish universities  
insight institute

mobilising knowledge for a better Scotland

## Objectives

- Impact on policy and practice
- Benefit members:
  - reputation
  - academic collaboration
  - business/staff development
  - networks

## Approach and aims

- Multi-disciplinary, multi-institution knowledge exchange
  - academics, policy makers, practitioners, wider public
- increase understanding
- share learning
- generate insights and ideas

**“The Scottish Government really value the work of the Scottish Universities Insight Institute...**

**•very effective way of bringing together researchers, practitioners and policy-makers...**

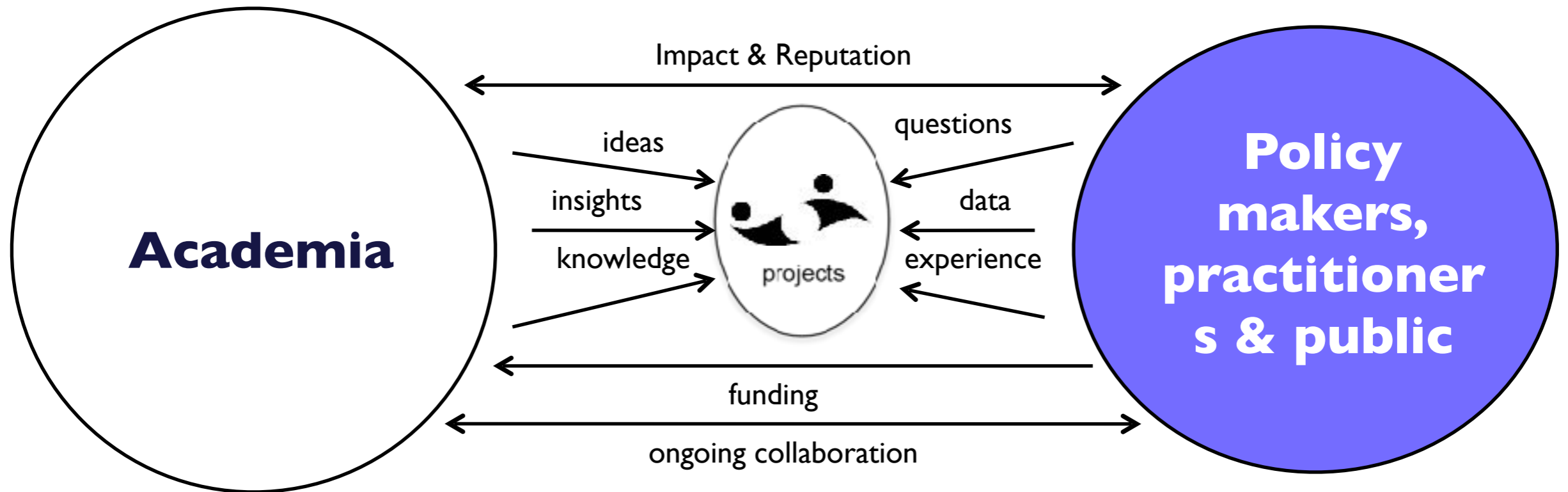
**•creates real impact by focusing on the key challenges for Scotland...**

**•very cost effective...**

**•allows for creative approaches to problems to be tested...**

**•leads to both academic research and policy and operational impact.”**

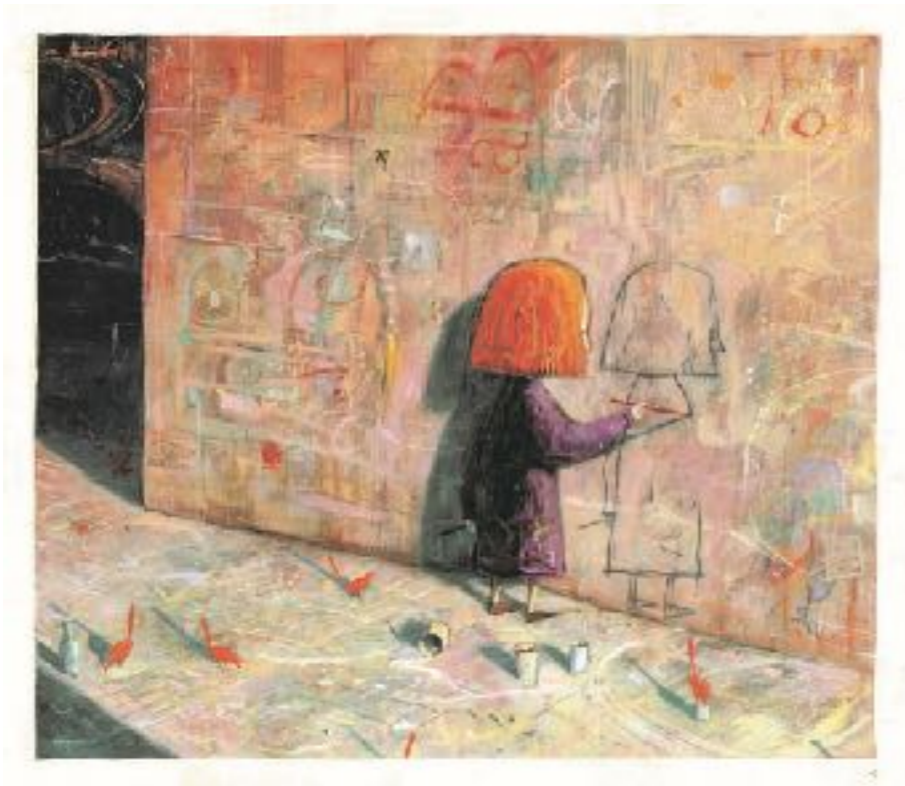
*Dr Roddy Macdonald - Head of Higher Education and Science Division, Scottish Government*



- Governing Board/Programme Committee – members, Scottish Government, SFF, SPICe, Audit Scotland, SCDI
- Two calls per year
- Director, Programme Manager, Events Co-ordinator
- Insight Centre + event space in other member universities + external venues

**catalyst, focal point, safe space, facilitator, interpreter, adviser, organiser**

# Recent Programmes



## Open Calls

- Coproducing Justice
- Life Stories and Child Bereavement
- Poverty, Educational Attainment and Mental Health and Wellbeing
- Storytelling for Resilience
- Creative Communities
- Policing digital futures

## Accelerating SDG progress

- Toolkits for teachers
- Socially just institutions (18-25)
- Intergenerational place making
- Food activism in the schoolyard



# Programme Review 2012-19



- Areas of focus
- Impact on policy/practice/academia
- Collaboration & partnership working
- Creative approaches / outputs
- Participant feedback

# Areas of Focus

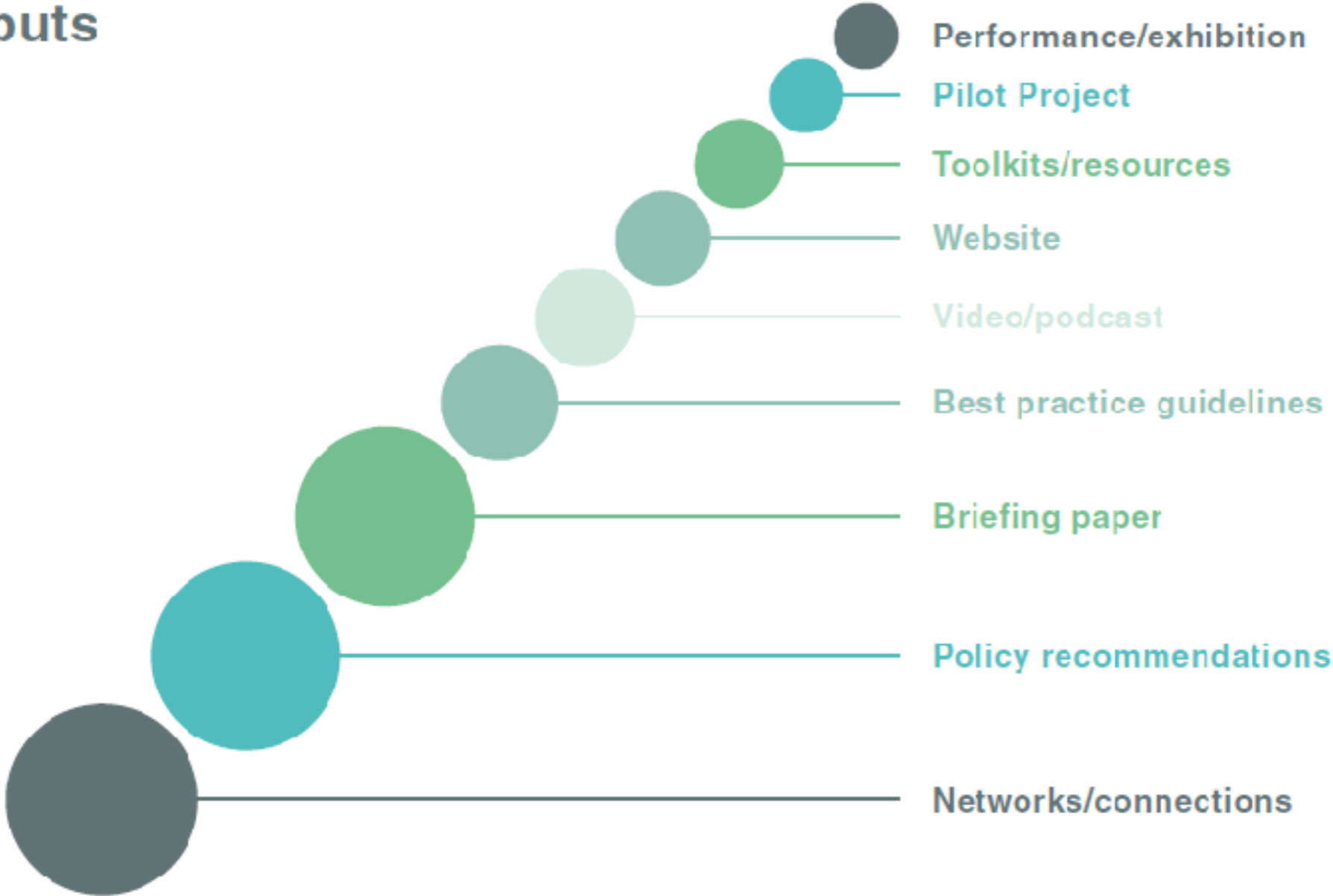


# REF Impact Indicators





# Outputs

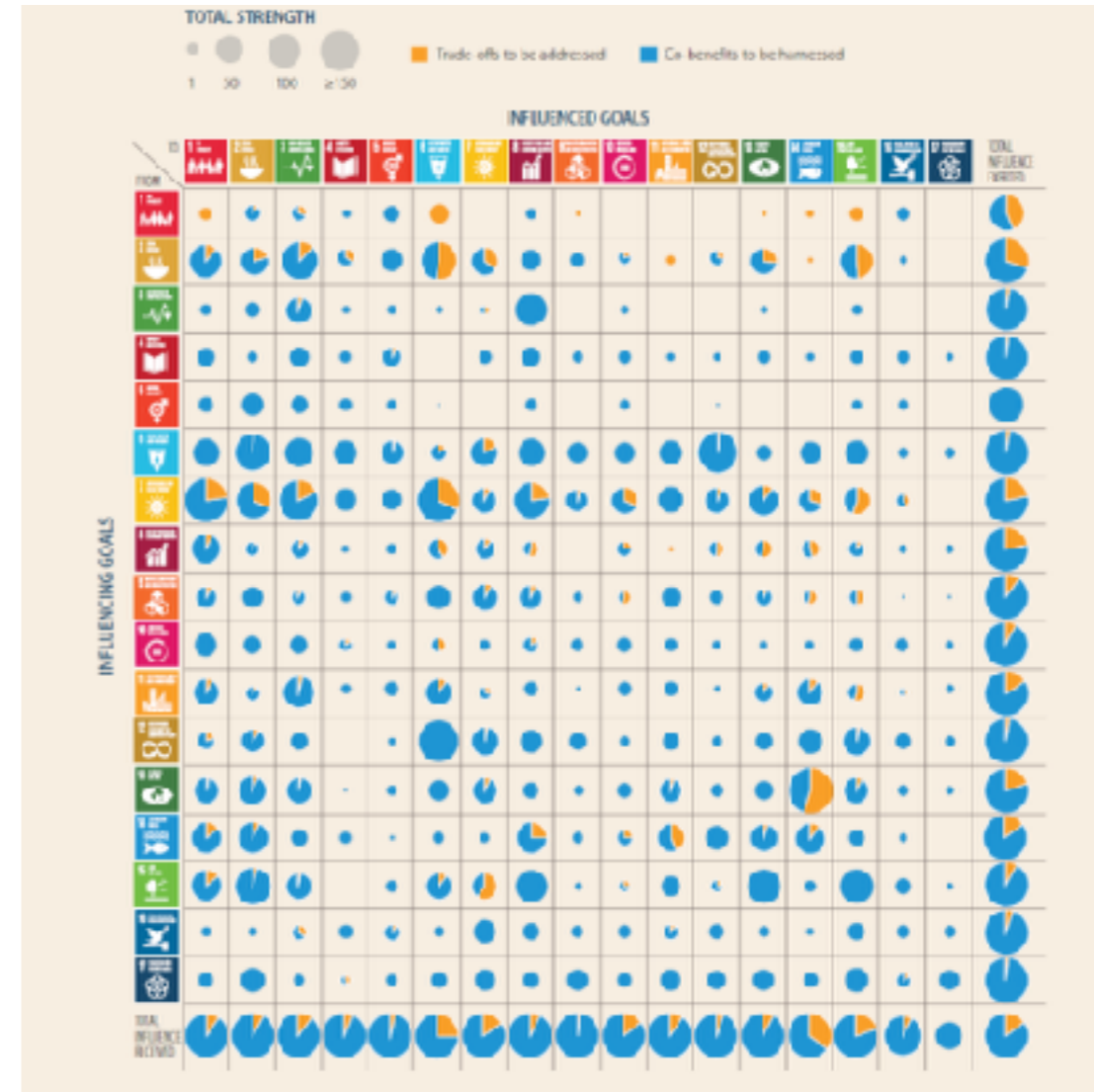
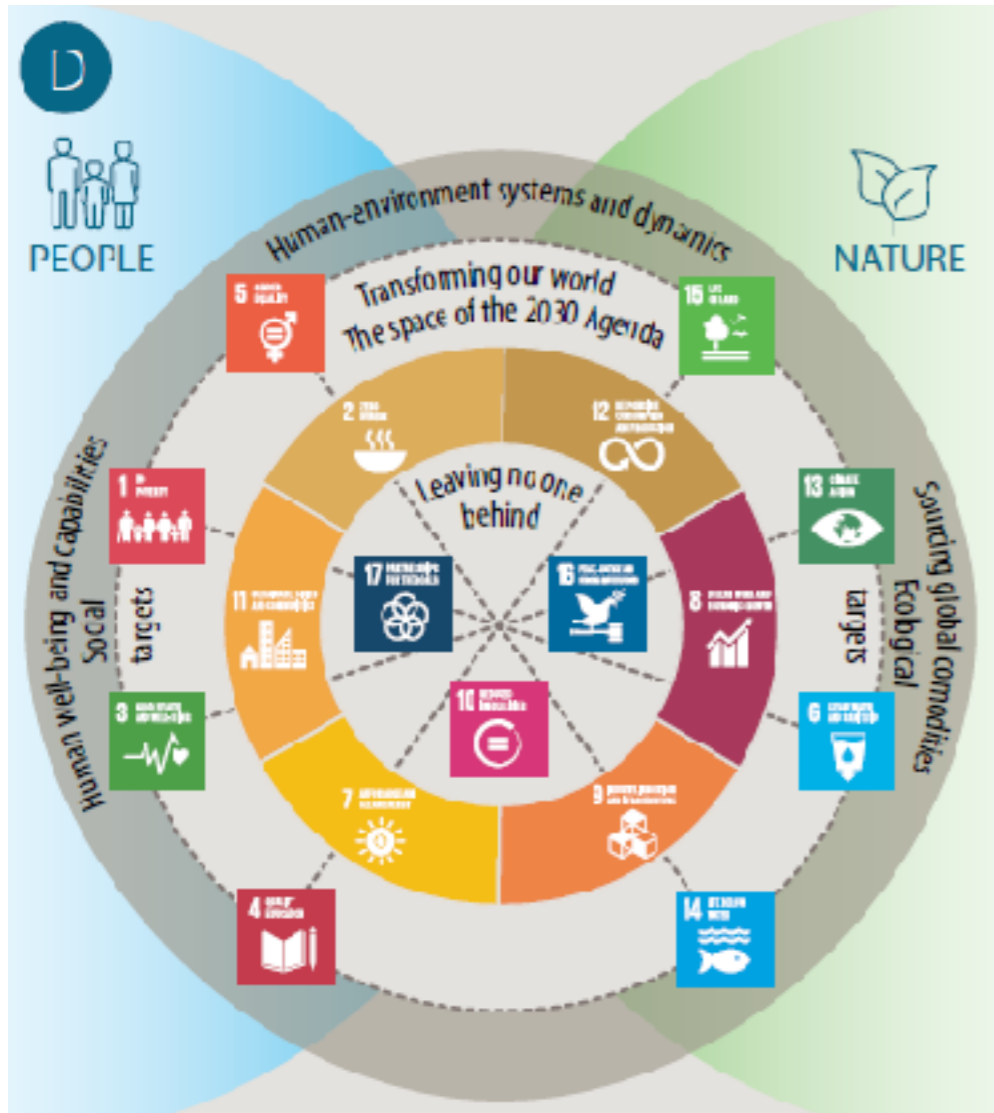


# Making a difference

## Planning a project – key questions

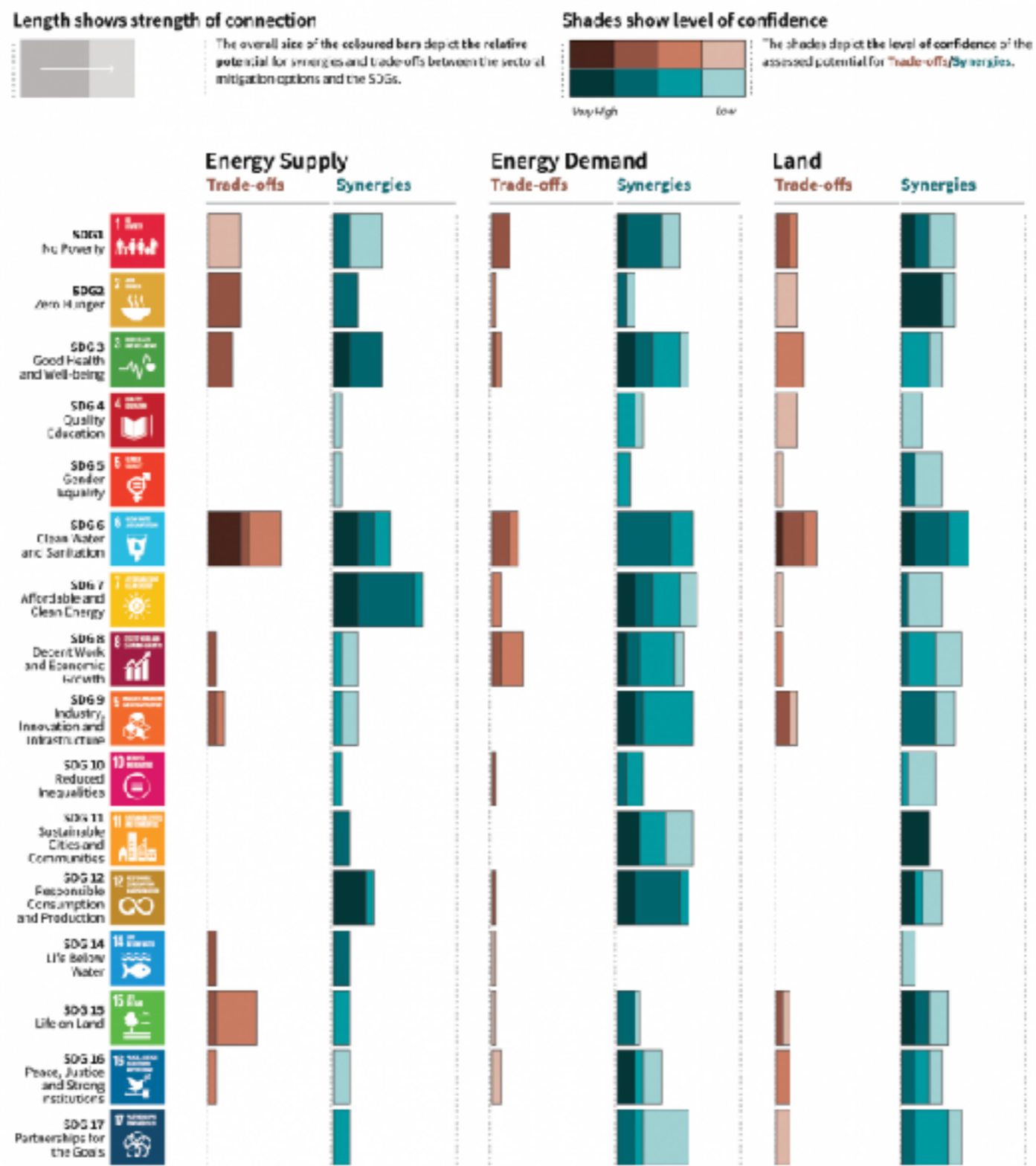


# Next call – Linking the Goals



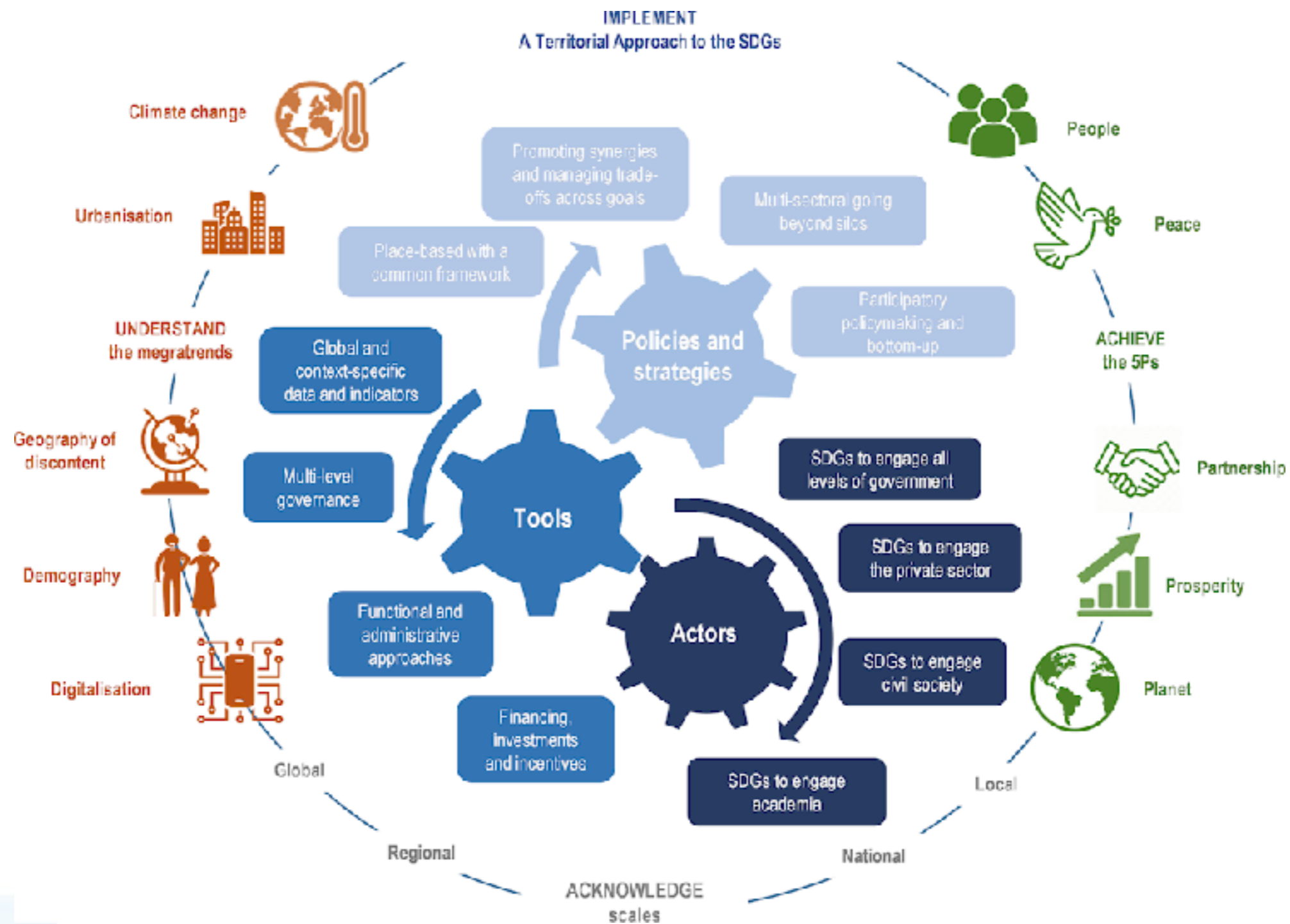
**“Advancing the 2030 Agenda must involve an urgent and intentional transformation of socio-environmental-economic systems ...Achieving that transformation... means carefully taking into account the interactions between Goals”**  
**UN Global Sustainable Development Report 2019**

# Linkages between climate mitigation and the SDGs



<https://www.ipcc.ch/sr15/chapter/spm/>

# Next call – Linking the Goals



“Universities can support governments at all levels by generating and disseminating the knowledge required to address the SDGs, by co-designing policies and strategies...” - OECD





# Criteria and Eligible Costs



- Two member universities
- Importance to Scotland and wider world
- Potential impact on policy and practice
- Relevance - aims & objectives
- Quality of research base
- Inter-disciplinarity
- Non academic input / KE focus
- International perspective
- Programme content/approach
- Travel
- Accommodation
- Catering
- Venue (if not using Institute)
- International visitor expenses
- Recording / facilitating events
- Project materials
- Communication / dissemination

# Timetable for next call

- Expression of interest - April 24
- Full application - May 22
- Programme Committee - June
- Decisions announced by July
- Programmes - Aug - January

<b>APRIL 2020</b>						
<b>SUN</b>	<b>MON</b>	<b>TUE</b>	<b>WED</b>	<b>THU</b>	<b>FRI</b>	<b>SAT</b>
			<b>1</b>	<b>2</b>	<b>3</b>	<b>4</b>
<b>5</b>	<b>6</b>	<b>7</b>	<b>8</b>	<b>9</b>	<b>10</b>	<b>11</b>
<b>12</b>	<b>13</b>	<b>14</b>	<b>15</b>	<b>16</b>	<b>17</b>	<b>18</b>
<b>19</b>	<b>20</b>	<b>21</b>	<b>22</b>	<b>23</b>	<b>24</b>	<b>25</b>
<b>26</b>	<b>27</b>	<b>28</b>	<b>29</b>	<b>30</b>		



**scottish universities  
insight institute**

mobilising knowledge for a better Scotland

**Tel: 0141 548 5930/4051**

**[info@scottishinsight.ac.uk](mailto:info@scottishinsight.ac.uk)**

**[www.scottishinsight.ac.uk](http://www.scottishinsight.ac.uk)**

 **@scotinsight**